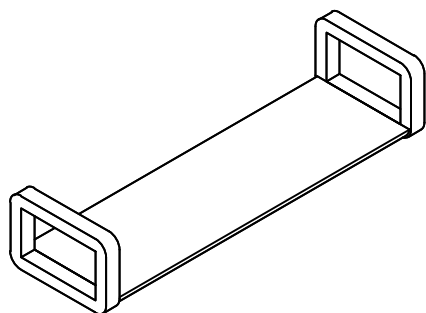


## Assembly Instructions

**FUTON**  
C O M P A N Y

# Oak Loop Wall Shelf Medium

ROPO no:



PLEASE READ THESE INSTRUCTIONS VERY CAREFULLY BEFORE YOU BEGIN, TO ENSURE THAT YOUR FUTON COMPANY PRODUCT WILL GIVE YOU MANY YEARS OF SATISFACTION

Thank you for buying Futon Company product

We are constantly striving to improve everything we do, but very occasionally mistakes do occur.

In the unlikely event that you find any part missing please call your nearest Futon Company store and we will arrange for the despatch of an immediate replacement.

Please keep all packaging until you have checked every part and assembly of your Futon Company product is complete.

Version number: 1

Product code: ST SHLF WALL LOOP MED

Date: 10/04/25

*experts in small space living*



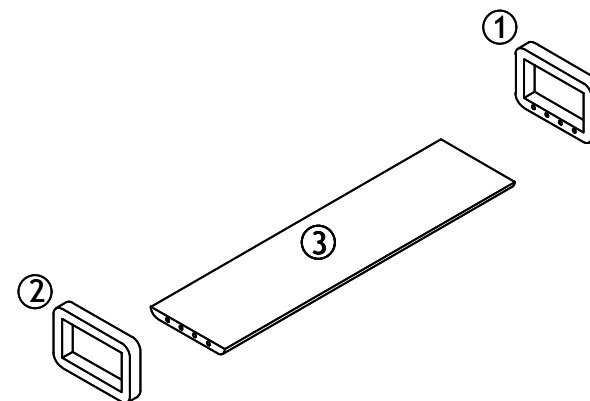
## Parts Checklist

Please count and check every component very carefully before you begin

① Right Side x 1

② Left Side x 1

③ Shelf x 1



## Fittings Checklist

Please count and check every component very carefully before you begin



① Wooden Dowel x 4



② Bolt x 4



③ Nut x 4



④ Pressure Plate x 4



⑤ Small Spanner x 1



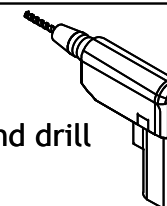
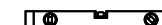
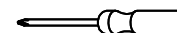
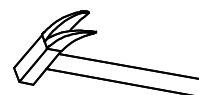
⑥ Wall fixing x 2



⑦ Short Screw x 2

To hang your Shelf correctly use the paper template. The distance between the two holes is  $575 \pm 2\text{mm}$  When tightening screws make sure they are close to the wall so the Shelf is tight to the wall when hung on keyhole plates.

⑧ paper template x 1



\*\*\* Cross head Screwdriver, spirit level, Hammer and drill also required for assembly.